

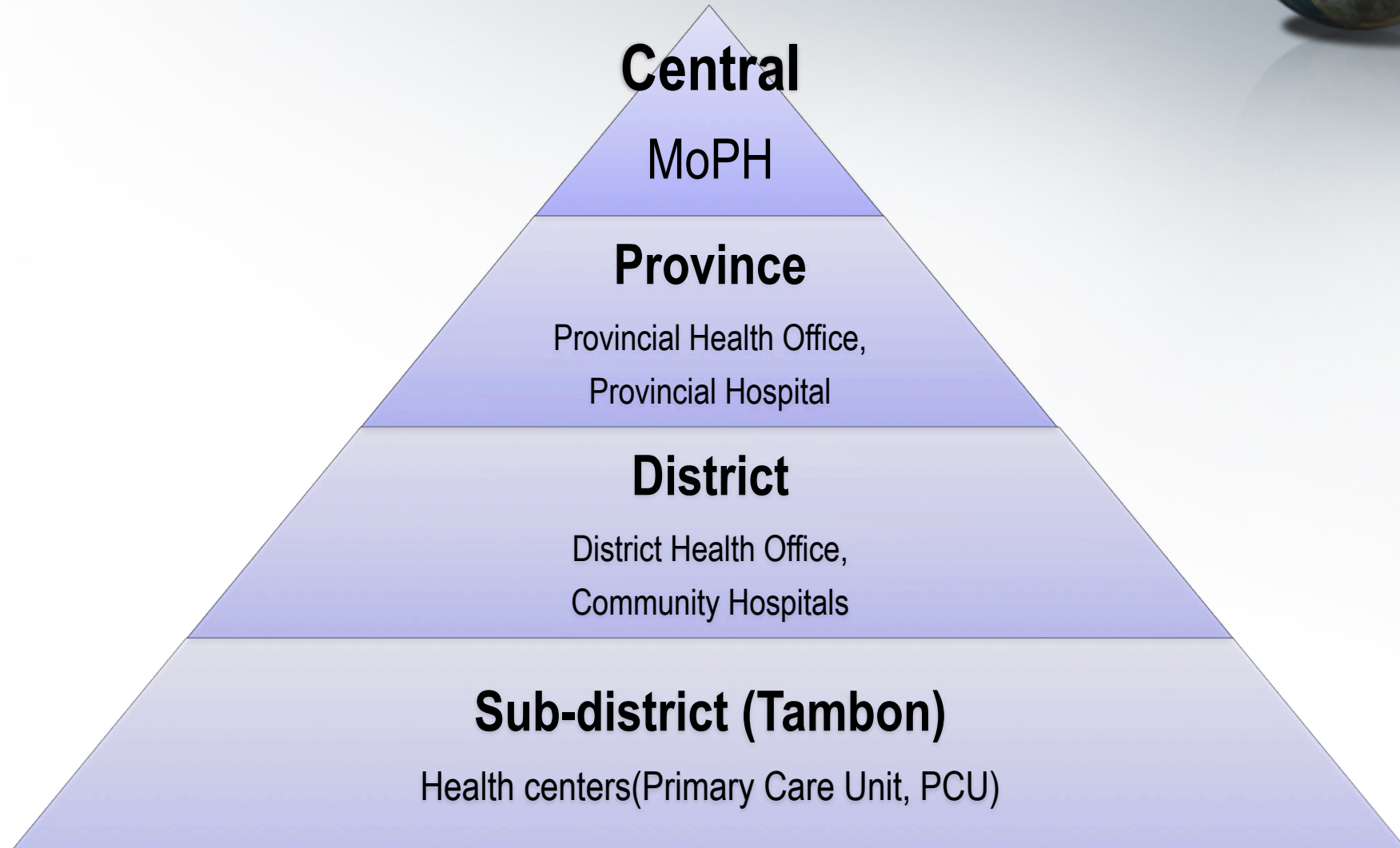
# Thailand Primary Health Care Information Systems

4<sup>th</sup> WHO-FIC Asia-Pacific Network Meeting  
Act City Hamamatsu Congress Center,  
Hamamatsu, Japan  
14-15 September 2009



*Boonchai Kijsanayotin MD., PhD. (Health Informatics)  
Bureau of Policy and Strategy, Ministry of Public Health*

# Health Services Hierarchy



# Level of Health Service Providers



## University Hospitals

(Teaching Hospital 500-2000 bed)



## Provincial Hospitals



## Community Hospitals



## Primary Care Units (PCUs)

# Primary Care Unit (PCU)



- Front line health providers
- 10,068 PCUs across the country
- Provide preventive care and primary medical care
- 3-5 employees/PCUs
- Nurses, health workers and public health professionals
- **NO DOCTOR**



**619 Public's Clinics in Bangkok**

# Proportion of Primary Care Services



<b>Services</b>	<b>Average visits/ month</b>	<b>Percentage of visits</b>
Primary care services	11,859,532	64.45%
Other healthcare services	6,542,771	35.55%

# Primary Care Services Setting



Services setting	Number of facilities	Percentage of primary care services
Primary Care Units (primary care practices with no doctors in-charge)	16,805	92.66%
Hospitals' primary care services (ambulatory care and clinics)	1,332	7.34%
Total	18,137	100.00%

# PCU Information System



- Both paper and computerized
- Collect : individual and aggregated records of person, family, insurance and facilities
- 99.8% have PC, 50% Internet connection
- 80% use MoPH's application –HCIS (Health Center Information System)
- **Spend 40% of their work hours on data management and reports**

# How information was used?



## Two type of health information

- Administrative data
- Clinical data

## How they are used?

- Mostly for administration
  - Reimbursement
  - Facility Activity Monitoring
  - Measurement and evaluation
- Clinical used
  - Medical Record Keeping

# National Minimal Standard Health Data Set



## Two minimal standard data sets:

- Standard data set for health insurance (12-file data set)
  - Hospital setting
  - IP, OP, Charge, ICD 10 Diagnosis, ICD 9 TM Procedure
  - Aim: reimbursement (DRG calculation)
- Standard data set for PCU (18-file data set)
  - PCU setting
  - OP, prevention promotion health activities data, charge
  - ICD 10 diagnosis
  - Aim: report facilities activities

# Interoperability for health information systems



Interoperability needs **STANDARDS**

- Semantics standards

  - Coding : ICDs, National Drug Codes

  - Medical Terminology: SNOMED-CT, LOINC

- Syntactic standards : HL7 messaging standards, HL7-CDA  
(Clinical Document Architecture)

- Core data sets standards

- Security and Privacy standards

# Health Information Development Model

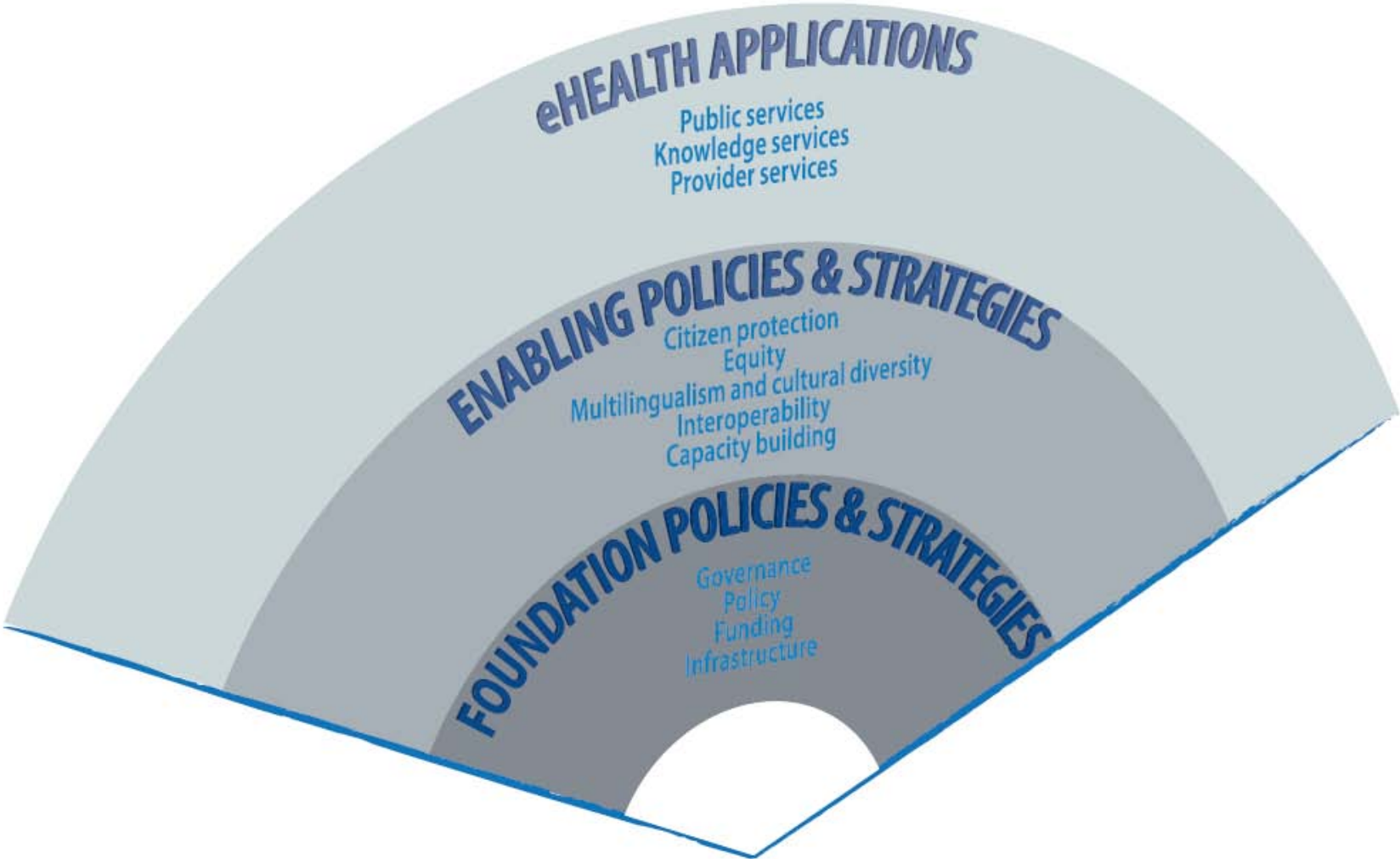


Figure 3. eHealth Development Model